

# Regional Democracy

## UNISON South East



As a Trade Union, UNISON is a democratic organisation. Democracy is at the heart of everything we do, from what we campaign on, to the democratic structures within the union and the rules governing membership of our organisation.

All members of the national union belong to a local UNISON branch. Over 100,000 members in 120 local branches form UNISON South East Region. Our members are our strength and our democracy is how members make their voices heard.

### **National Executive Committee**

The National Executive Committee (NEC) is the highest elected body in our union. Every two years, members in the South East vote to elect our region's four representatives to the NEC. They represent our interests at a national level and are invited to all regional meetings to report back on their work.

### **Regional Council**

The Regional Council is the governing body of the region and all branches are invited to participate. It meets 3 times a year including an Annual General Meeting normally held in February. It develops regional policies, ensures they are implemented and determines the region's objectives and priorities in line with the union's national objectives and policies.

### **Regional Committee**

The Regional Committee is the operational body of the Regional Council. The Regional Committee exercises the functions of the

Regional Council between meetings and is accountable to Regional Council, to which it submits regular reports.

### **Convenors Group**

Made up of the Regional Convenor and two Deputy Convenors, the Convenors Group are the most senior elected positions in the region, they are elected at the Regional Council AGM and they chair meetings of the Regional Committee and Council.

### **Objectives Group**

Made up of the Convenors Group, Chairs of the three Strategic Committees (see below) and NEC members from the South East, the Objectives Group takes a lead on progressing and monitoring key strategic decisions for the region.

The Regional Management team are also members of the Objectives Group.

## **GET INVOLVED!**

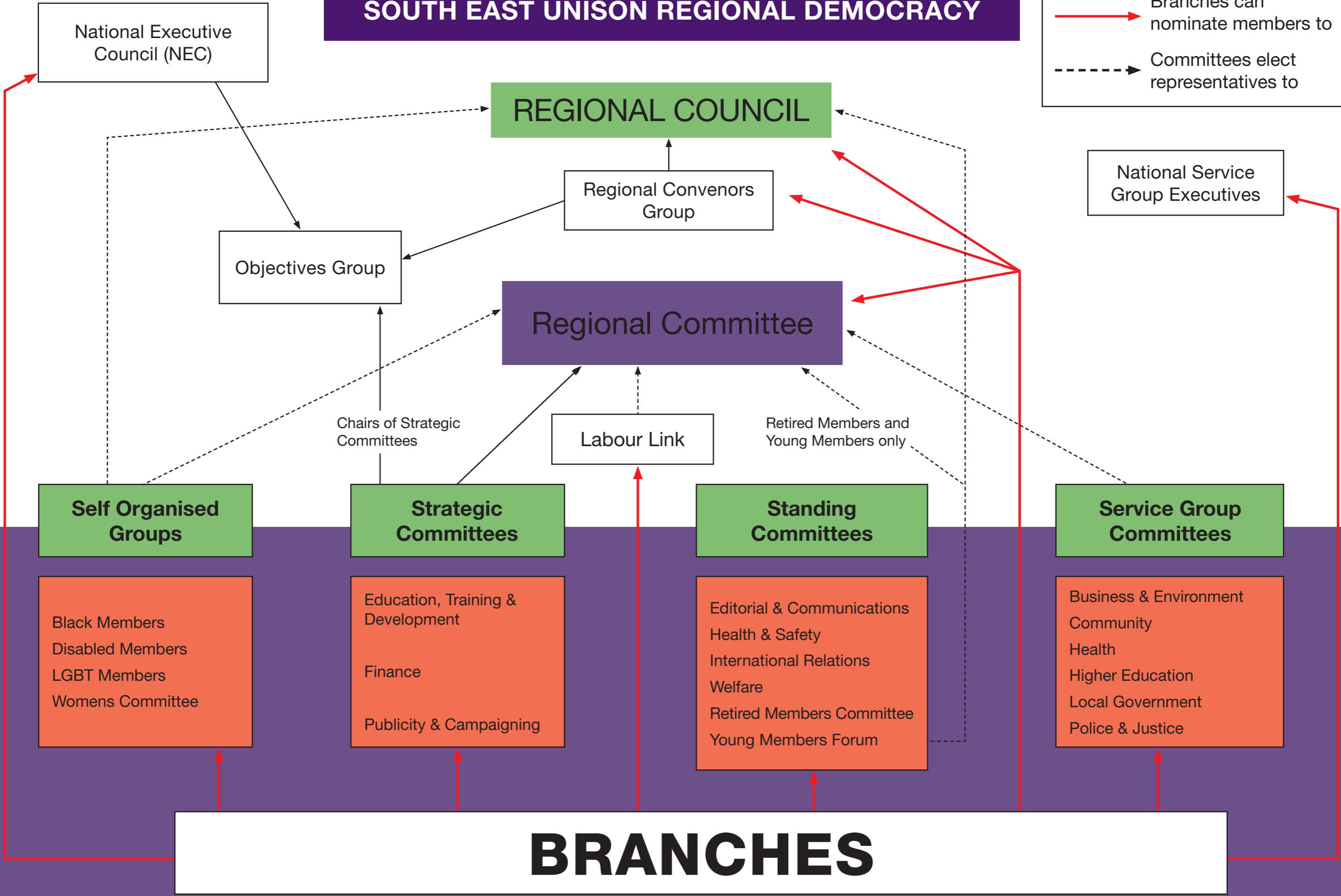
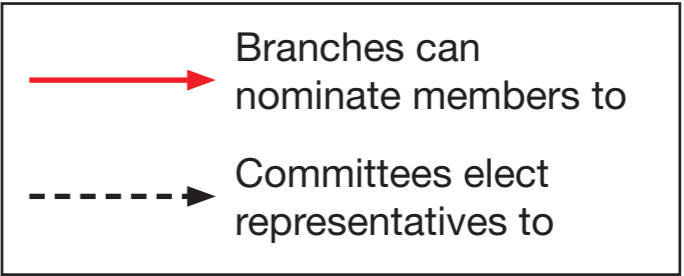
If you would like to get involved in the democracy of the region, attend Regional Council or be nominated to one of the committees, please speak to your Branch Secretary or Regional Organiser.

Contact:



**I'm  
proud  
to be in  
UNISON**

# SOUTH EAST UNISON REGIONAL DEMOCRACY



# Committees & Groups within the Region

STRATEGIC COMMITTEES	EDUCATION, TRAINING & DEVELOPMENT	ETD plans our activist education programme and is responsible for overseeing member recruitment, organising and branch democracy and governance.
	FINANCE	The Finance Committee is accountable to the Regional Council for all finances in the region relating to the lay member budget. It produces and monitors the regional budget, and reports to the Regional Council regularly.
	PUBLICITY & CAMPAIGNING	This committee is responsible for the focus & direction of regional campaigning and communications work (including the regional website) and adjudicates on bids made by branches and other groups to the General Political Fund, the Campaign Outreach Fund, the Regional Campaign Fund, and the Regional Pool.
STANDING COMMITTEES	EDITORIAL & COMMUNICATIONS	Ed & Comms takes a lead in the production of regional publicity materials, including the South East Campaigner magazine and the region's National Delegate Conference Bulletin.
	HEALTH & SAFETY	This committee's function is to coordinate and develop campaigning for improved health & safety provision across the South East.
	INTERNATIONAL RELATIONS	Intentional Relations oversees our links with trade unions in other countries and also coordinates with international campaigns on a wide range of human rights issues and international development.
	WELFARE	The Welfare Committee is uniquely able to intervene with individual member in cases of great need. UNISON Welfare is a vital part of our work for which many members have personal reason to be grateful. The Welfare Committee coordinates this work in the region.
	RETIRED MEMBERS COMMITTEE	These two regional bodies are classed as standing committees, but their participants are not elected by the Regional Council. Instead, the committees are elected by young and retired members in the region at their own respective AGMs and these committees work on a wide range of issues for these groups.
	YOUNG MEMBERS FORUM	
SELF ORGANISED GROUPS	BLACK MEMBERS	UNISON supports networks of self organised groups (SOGs) in branches and regions across the union. Our SOGs campaign for equality in the workplace and for improvements to legislation for workplaces and the wider community. The SOGs are represented at Regional Council and most other regional committees, but are accountable to their respective national group.
	DISABLED MEMBERS	
	LGBT MEMBERS	
	WOMEN'S COMMITTEE	
SERVICE GROUPS	BUSINESS & ENVIRONMENT	UNISON represents people employed in all areas of public services, and in the region we organise our members into 6 service groups (SGs).
	COMMUNITY	
	HEALTH	
	HIGHER EDUCATION	There is a SG committee for each and they coordinate campaigning and organising in their respective employers and workplaces. The SGs are represented at Regional Committee and most other regional committees, but are accountable to their own national executive SG.
	LOCAL GOVERNMENT	
	POLICE & JUSTICE	
	LABOUR LINK	UNISON is affiliated to the Labour Party and the Labour Link committee coordinates our joint campaigning work with the Party within our branches and across the region.